



*Your cargo, ... our focus.*



**ASSOCIATED TERMINALS**  
AT PORT OF SOUTH LOUISIANA / GLOBALPLEX



# EXPANSIVE & MODERN



With proven expertise, innovative solutions and a commitment to unsurpassed service, Associated Terminals offers attention to detail at the Port of South Louisiana's (POSL) premier cargo-handling facility—the Globalplex Intermodal Terminal.

From Panamax vessels to inland barges, Globalplex offers customers great value for shipping goods through the Lower Mississippi River transport network.

Globalplex is located at Mile 138.5 AHP on the Lower Mississippi River in Reserve, LA. This facility is equipped with dock-mounted, gantry cranes. It features covered and open storage, and provides quick access to the Interstate highway system via a direct connection to U.S. Highway 61.

Rail service is provided onsite by Canadian National/Illinois Central Railroad (CN/IC) with switching access to the Kansas City Southern (KCS) rail system.

This brochure presents a snapshot of our POSL operations. We invite you to learn more about our company, and we welcome your visit to our offices or the terminal.

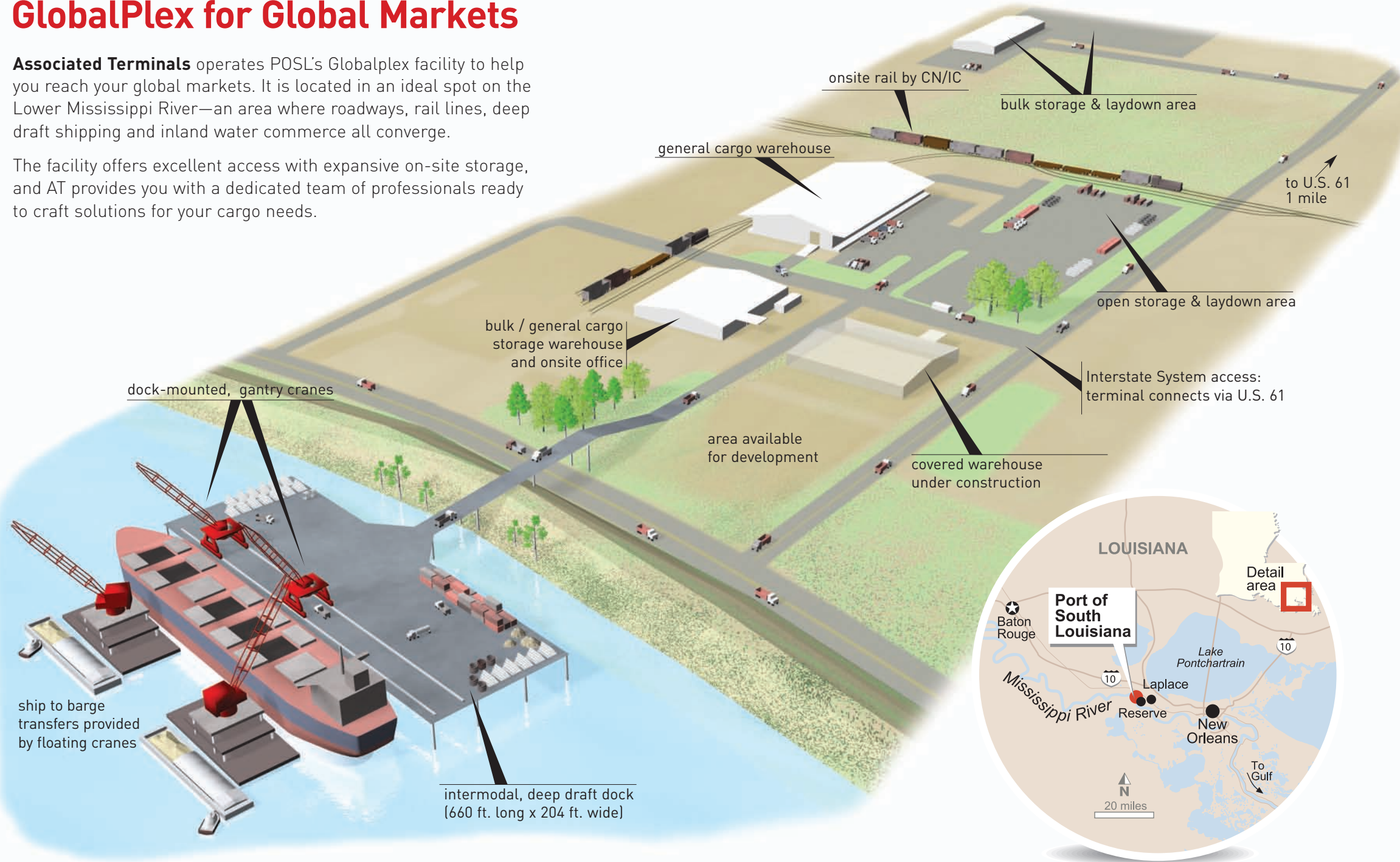
## Services Provided at Globalplex:

- ❖ Dry & liquid bulk handling
- ❖ General cargo handling
- ❖ Project cargo & heavy lifts
- ❖ Ship to shore or ship to barge transfers
- ❖ Onsite storage (open and covered)
- ❖ Logistics support
- ❖ Terminal Management

# GlobalPlex for Global Markets

**Associated Terminals** operates POSL's Globalplex facility to help you reach your global markets. It is located in an ideal spot on the Lower Mississippi River—an area where roadways, rail lines, deep draft shipping and inland water commerce all converge.

The facility offers excellent access with expansive on-site storage, and AT provides you with a dedicated team of professionals ready to craft solutions for your cargo needs.



## General Info & Quick Facts

Globalplex is an intermodal shipping terminal located at the heart of the largest tonnage port in the western hemisphere – the Port of South Louisiana.

Associated provides shippers with expert services and high throughput levels for bulk, break-bulk, container and project cargoes at this modern cargo facility.

### Connected to Major North American Markets

The Mississippi River provides deep draft access that

allows for ship-to-barge operations. U.S. 61 provides quick connections to the Interstate highway system. And, intra-complex rail spurs are operated by Canadian National (CN)/Illinois Central (IC), whose transcontinental network is linked to the Kansas City Southern Railroad (KCS).

Globalplex features a deep draft (greater than 47 feet) bulk and general cargo dock capable of accommodating some of the largest ships on the Mississippi River. The dock is 660 ft. long, by 204 ft. wide, and it is served by two dock-mounted,

Manitowoc 2250 gantry cranes capable of traversing the dock's full length.

Years of experience and a reputation for excellent customer service are hallmarks of our work. Please contact us to learn more about what we can do for your cargo move or logistics planning at Globalplex, or visit our website to read the latest news about our facilities and service profile.

[www.associatedterminals.com](http://www.associatedterminals.com)



The terminal is efficient and ideal for a broad range of cargo. Modern warehouses provide 166,000 sq. ft. of covered storage, all within the complex. In addition to covered space, Globalplex offers 177,000 sq. ft. of paved laydown area to stage cargo prior to shipment.

### Added Benefits at Globalplex:

- ❑ Adjacent to five deep-draft, midstream buoy systems operated by Associated Terminals
- ❑ Value-added processing and shipping components
- ❑ Located at heart of Lower Mississippi River's intermodal transport network
- ❑ Shared vision for development between POSL & AT



Robots bag garnet sand at one of POSL's warehouses.



Class I rail provided by Canadian National / Illinois Central.



Supersacks loaded onto trucks at general cargo warehouse.





## **ASSOCIATED TERMINALS**

1342 Hwy. 44  
Reserve, LA 70084

tel: 985.536.4520  
fax: 985.536.4521

***[www.associatedterminals.com](http://www.associatedterminals.com)***

Associated Terminals is a privately owned terminal operations and logistics solution company with headquarters in Louisiana. The firm operates cargo facilities across the U.S. Gulf, and holds a reputation for unsurpassed customer service.

Call us to learn how we would design solutions to meet your firm's specific cargo handling needs.